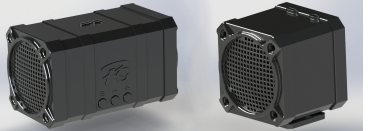


MODEL SOUND SIMULATOR

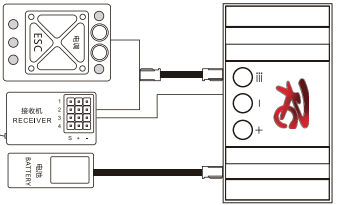


Please read the manual carefully before using the equipment and strictly follow the operation procedure. We do not accept any liability, including but not limited to incidental or consequential damages, arising out of the use of this product, and we do not accept any liability arising out of any unauthorized modification of the product. We have the right to change the product design, appearance, performance and use requirements without notice.

- Speaker should be in good ventilation, since sounds control unit is kind of heat producing device.
- Speaker would be damaged if volume keeps too high. High volume means high voltage input. And Input power can be controlled by volume control.
- Speaker would be damaged if it keeps full throttle for long time. Full throttle means high power input.
- Keep volume low enough when using 3S/4S Lipo Battery. Speaker would be distorted or could be damage if power fully loaded to the system.

- Advanced SGS (Sound Particle Synthesis Technology) and SFC(intelligent state-following compensation technology) are supported.
- Aux Channel is supported to simulate multiple auxiliary sounds.
- 10 engine sounds and 5 alarmsSupported.
- Language of Chinese and English for operation prompts, easy to operate.
- Brake sound has effect of exhaust brake. And brake sound can be set to On/Off freely.
- Reverse throttle settingavailable.
- Standby Mode supportedand it standby with no radio operation in 60 seconds. Move the throttle to wake it up.
- Low-voltage protection is supported, and battery types(2S-4Slipo) are automatically detected when powered up.

- Input Voltage: 6.5-16.8 V (2S-4S LIP0)
- Speaker Power: 5W
- Speaker impedance: 4
- Mono modelsize: 46x46x42mm
- Dualmodel size: 81x 42x 42mm
- Package size: Mono model155x65x65mm, Dual model 100x55x70mm



- **Set throttle travel**
Press "-" volume button about 3 seconds, follow the prompts, set highest point of forward/backward of throttle travel.
- **Choose engine sound**
Press "=" menu key about 3 seconds and release the key after hearing the prompt of "engine sound". Select engine sound by pressing "+" or "-" volume button. Try engine sound by moving throttle. Press "=" menu key once to confirm and Exit.
- **Choose honk sound**
Press "=" menu key about 6 seconds and release the key after hearing the prompt of "honk sound". Select honk sound by pressing "+" or "-" volume button. Press "=" menu key once to confirm and Exit.

- **Set reverse throttle**
Press "=" menu key about 9 seconds and release the key after hearing the prompt of "throttle direction". Turn On/Off by pressing "+" or "-" volume button. Press "=" menu key once to confirm and Exit.
- **Set effect of exhaust brake**
Press "=" menu key about 12 seconds and release the key after hearing the prompt of "Exhaust Brake". Turn On/Off by pressing "+" or "-" volume button. Press "=" menu key once to confirm and Exit.

Set volume by pressing "+" or "-" button.